

The ELM Group is dedicated to providing effective land use and water resource management strategies that result in well-balanced, healthy and sustainable communities. Water, land and air are the base of a healthy environment and the manner of their beneficial use must be sustainable. ELM's goal is to provide a comprehensively integrated, technically balanced and scientifically defensible approach to land and water resources use, while supporting sustainable communities. In order to achieve this goal, ELM offers a wide range of environmental resource management services, including:

land use planning / management

- ▶ Watershed Studies / Management
 - Water Budget Analysis
 - Water Quality Evaluations
 - Aquatic Impact Assessments
 - Surface / Ground Water Assessments
- ▶ Property Development / Redevelopment
- ▶ GIS Modeling & Mapping
- ▶ Natural Capital
- ▶ Natural Resource Inventories
 - Wetland Delineations
 - Rare Species Surveys
 - Stream Surveys
 - Biological Studies / Surveys
- ▶ Floodplain Management
- ▶ Local Zoning & Land Use Ordinances
- ▶ Public Workshops
- ▶ Comprehensive Plans



environmental services

- ▶ Environmental Due Diligence
 - Phase I ESAs / Transaction Screens
 - Phase II ESAs / Site Investigations
 - Remedial Cost Estimates
- ▶ Environmental Compliance
 - Full Facility Audits & Compliance Reviews
 - Pollution Prevention Plans (SPCC, SWPPP, DPCC)
- ▶ Remedial Investigation / Action
 - PA Act 2 Site Characterization / Closure
 - Brownfield Support
 - UST / AST Closure
 - Remedial Investigation
- ▶ Subdivision / Development Plan Review
- ▶ Expert Testimony / Litigation Support

ELM's Proven Success

- ▶ Preparation of Grant Applications to Obtain Necessary Funds
- ▶ Effective Land Use Planning Combined with Natural Resource Management
- ▶ Innovative Solutions for Sustainable Communities
- ▶ Legacy Planning for Future Generations

CONTACT INFORMATION

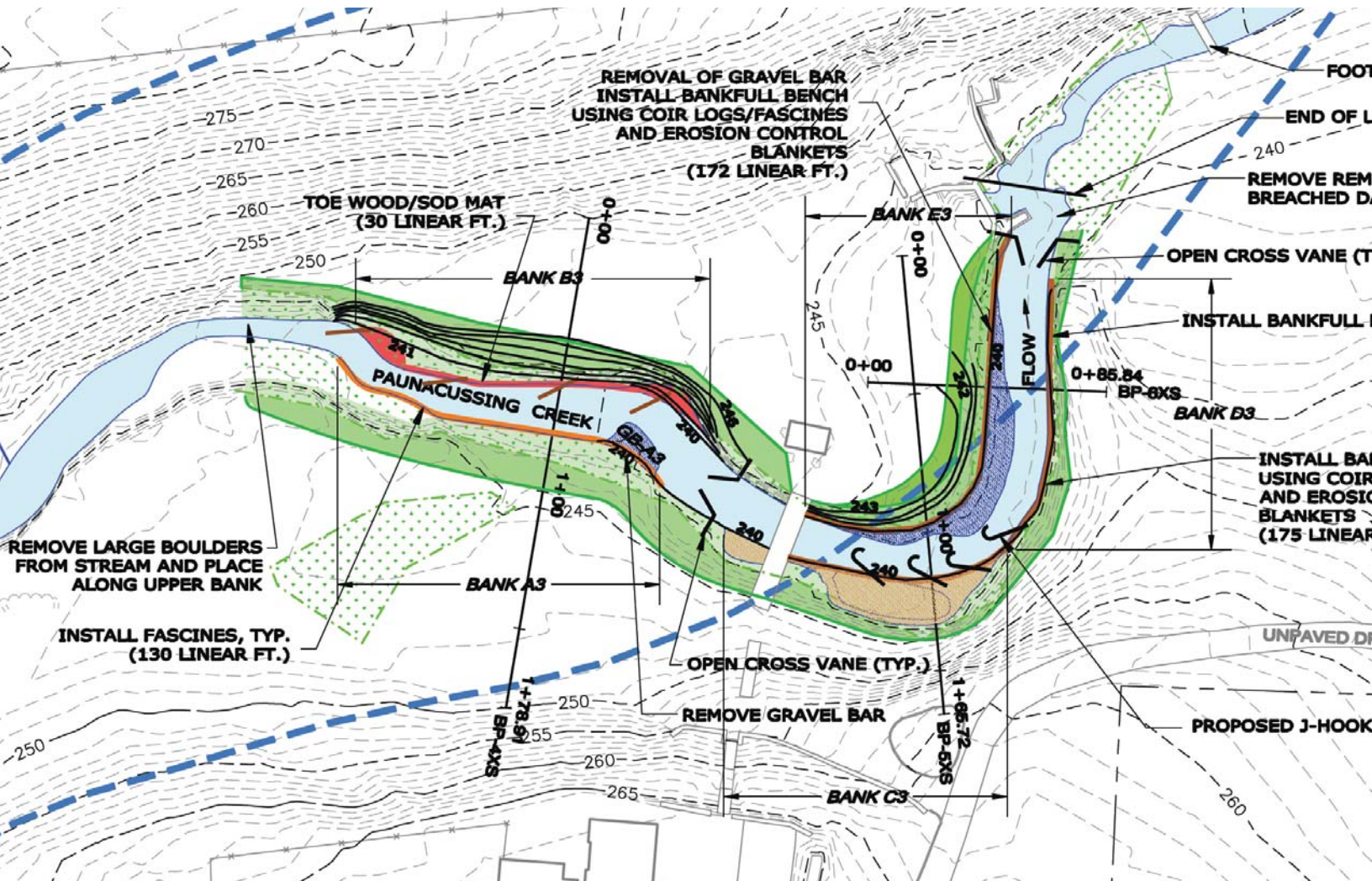
Robin Dingle, P.W.S.
Kimberly N. Edelman, P.W.S.

Tel: 610.866.6611 x 308
Tel: 610.866.6611 x 306

rdingle@elminc.com
kedelman@elminc.com

environmental permitting

- ▶ Wetlands
- ▶ Streams
- ▶ Stormwater
- ▶ Hydrology and Hydraulic Studies
- ▶ Environmental Assessments
- ▶ Rare Species Coordination
- ▶ Soil & Erosion
- ▶ Pre-Application Meetings
- ▶ Agency Consultation / Coordination
- ▶ Engineering Design
- ▶ Anti-Degradation



The ELM Group

LEHIGH VALLEY OFFICE

T 610.866.6611 F 610.866.6612
2475 BAGLYOS CIRCLE, BETHLEHEM PA 18020

VISIT OUR WEBSITE

www.ExploreELM.com